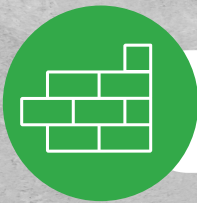




شركة ريسوت للإسمنت
Raysut Cement Company



The Monthly Magazine



**Ideal for building
and construction**



**It is used to make
concrete**

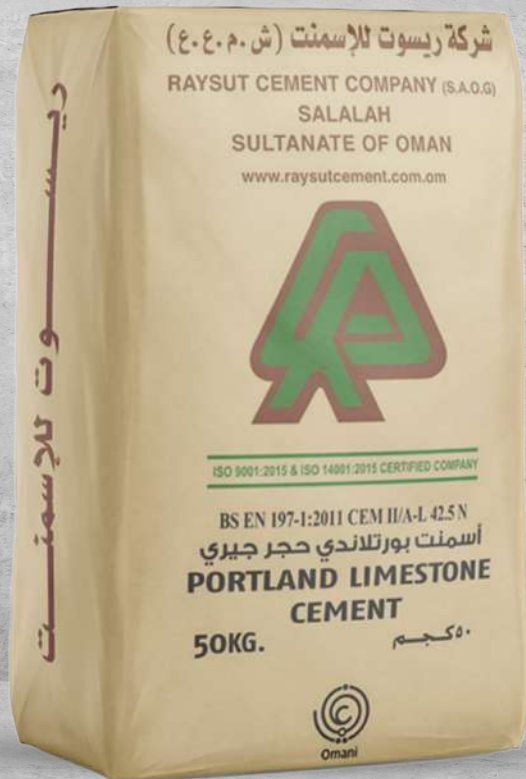


**Environmentally
friendly product**



Specifications

Omani - British - American



We Guarantee Quality
ملتزمون بالجودة



Opening speech, CEO



Dear All

I would like to extend my sincere thanks and gratitude to all of you for all the efforts exerted by you over the past period, as I assure you all that we are on the right path leading to the prosperity of Raysut Cement Company and all its subsidiaries.

Therefore, I hope that everyone will continue to make these high efforts, which in turn will enable us to reach our goals.

“Wishing everyone good health and happiness and for the company more further achievements and prosperity.”

CEO

Khalid Al Rawas



HSE DEPARTMENT

Raysut Cement Company celebrated the occasion of the Omani Environment Day, in cooperation with the Environment Authority and the Environment Consulting Company at Wadi Adonab in Rayaut , where 20 frankincense trees were planted.



A training workshop were held in Rayaut Cement Factory about the 5S , to improve the work environment and 10 leaders were trained to work on the continuous improvement project.



Environmental Monitoring for the last quarter of 2022, which included:

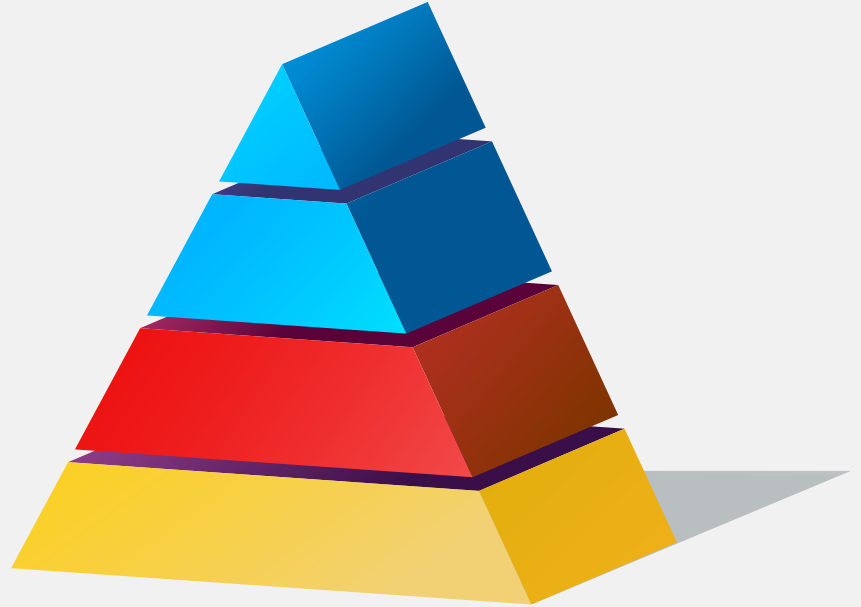
- Noise in the workplace
- Factory emissions control





HSE Department

Achievement pyramid



- Linking the air pollution quality station with the Environment Authority system
- Plan to develop and train staff in the field of health and safety
- Activate the warning and waste system
- Continuous exercises in the field of firefighting
- Participation with the Environment Authority in training workshops in the field of environment
- A 5S project for the continuous improvements in the factory
- Environmental monitoring for the last quarter of 2022, which included:
 - Noise in the workplace
 - Emission control



HR DEPARTMENT



Renewal of the Health Insurance Policy for the year 2023



Completing of Employee Annual Appraisal forms for the year 2022



Creating some internal jobs opportunities for some departments in the company



Initiating the Analyses of the Training needs of employees in various departments.



MECHANICAL AND MAINTENANCE Department

LINE- 3 KILN SHUTDOWN SUMMARY

SHUTDOWN SUMMARY

Number of shutdown days as per Plan	20 days (Flame off to Flame on)
Shutdown started with Flame off	29th Nov 2022 at 0:00 AM
Actual Light Up done	18th Dec 2022 at 3:00 PM (20 Days)

LINE- 3 KILN SHUTDOWN SAFETY AWAIRNESS AT WORKSHOP



(Rectification/Improvement Kiln shell with tyre replacements (AUC





MECHANICAL AND MAINTENANCE DEPARTMENT

Rectification/Improvement Kiln shell with tyre replacements (AUC)



Rectification/Improvement : Kiln old shell removal



Rectification/Improvement : New Shell installation





MECHANICAL AND MAINTENANCE DEPARTMENT

Rectification/Improvement : New Shell installation



Kiln side wall patch work done



Kiln Outlet tyre shimming done



Rectification/Improvement :



Cyclone casing crack



Bucket elevator casing crack



Rectification/Improvement :





MECHANICAL AND MAINTENANCE DEPARTMENT

Dust Chamber Casing Repair



Before



after

Rectification/Improvement :



Before



after

Preheater Cyclone casing cracks repair work done

Cement mill 3 dynamic separator



Before



after

Dynamic separator casing tiles fitting work done



MECHANICAL AND MAINTENANCE DEPARTMENT

533FN4 V separator fan welding and balancing done Damper plates and shaft changed



Before



after

Cement mill3 outlet bucket elevator



Cement mill 3 mill discharge bucket elevator 563BE1 gearbox changed

Line 2 VRM roller bearing changed and sealing checked





QUARRY DEPARTMENT

Improvement: crusher Efficiency

There is improvement in productivity of limestone crushers efficiency.

In Line 2 Crusher there is improvement in crushing efficiency is 509 Tons per hour in comparison with earlier 505 Tons per hour. Rated output of the crusher is 500 Tons per hour.

In Line 3 Crusher the improvement in crushing is from 607 to 614 Tons per hour. Rated output of crusher is 600 Tons per hour.



Crusher Environment

Water spraying on the materials on the belt conveyors to control the air borne dust.





QUARRY DEPARTMENT

Renewal of Mining

Renewal of Mining and Environment Permits in limestone quarry of old limestone quarry and Shale stone quarry at Wadi Shat by legal compliances the follow ups with concerned government departments.





SALES DEPARTMENT

Logistics Figures



Quantity dispatched & loaded from Salalah Plant to Salalah Port-

Type	December,2022	January,2023	Increase /Decrease	% Increase/Decrease
Bags	66,094.000	88,938.500	22,844.500	%25.69
Bulk	15,600.360	45,073.170	29,472.810	%65.39
Total	81,694.360	134,011.670	52,317.310	%39.04
Average Loading Hour in MT /	148	186	38.130	%20.49

HOW TO STAY IN THE SAFETY ZONE



FALLS



ELECTROCUTIONS



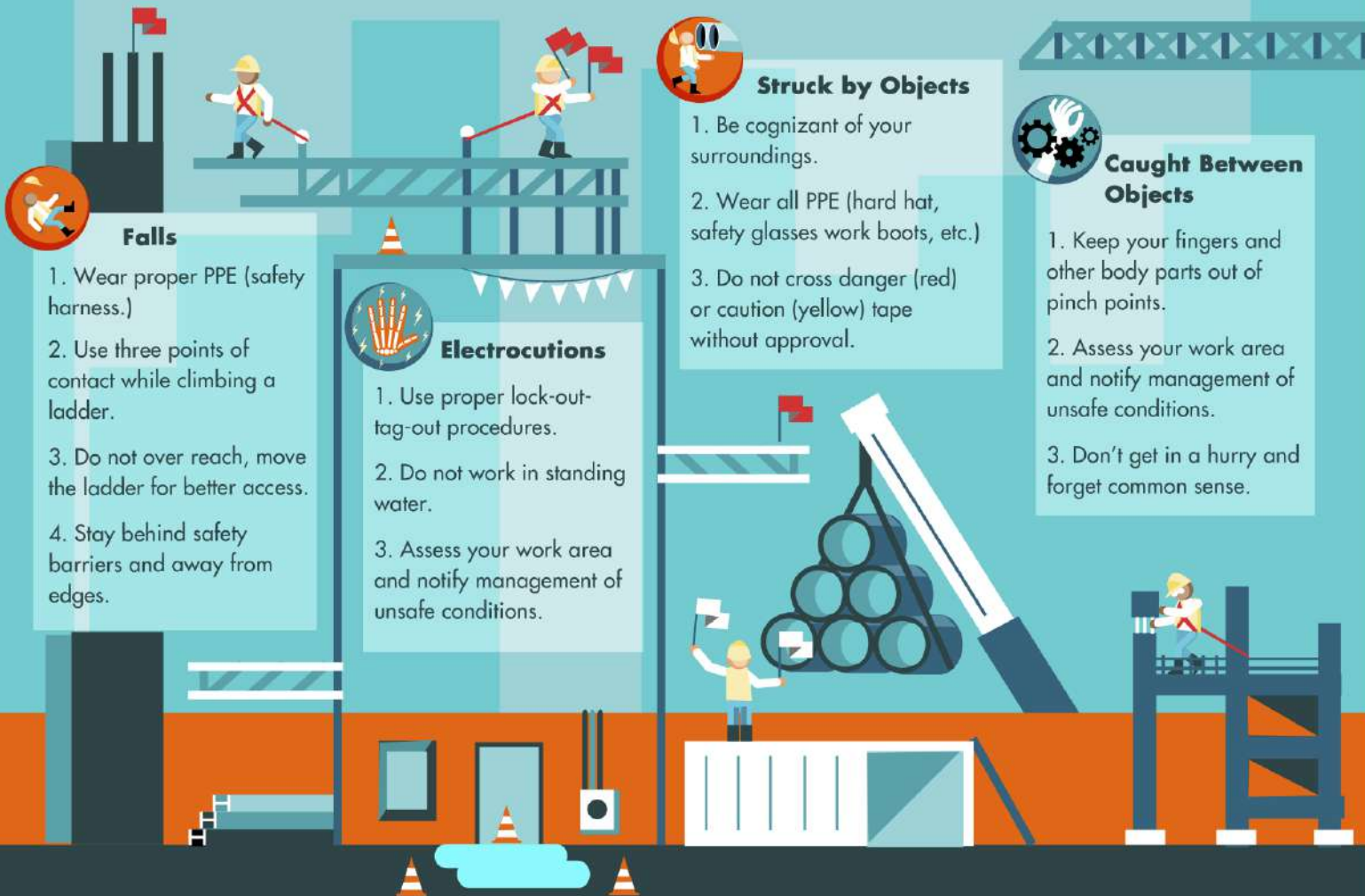
**STRUCK BY
OBJECTS**



**CAUGHT BETWEEN
OBJECTS**

HOW TO AVOID THE FATAL FOUR

THE FATAL FOUR INJURIES WERE RESPONSIBLE FOR 57% OF CONSTRUCTION RELATED DEATHS IN 2013



Falls

1. Wear proper PPE (safety harness.)
2. Use three points of contact while climbing a ladder.
3. Do not over reach, move the ladder for better access.
4. Stay behind safety barriers and away from edges.

Electrocutions

1. Use proper lock-out-tag-out procedures.
2. Do not work in standing water.
3. Assess your work area and notify management of unsafe conditions.

Struck by Objects

1. Be cognizant of your surroundings.
2. Wear all PPE (hard hat, safety glasses work boots, etc.)
3. Do not cross danger (red) or caution (yellow) tape without approval.

Caught Between Objects

1. Keep your fingers and other body parts out of pinch points.
2. Assess your work area and notify management of unsafe conditions.
3. Don't get in a hurry and forget common sense.



SALES DEPARTMENT

Export Sales



Export Sales has shown an increase of about 26% in January 2023 as compared to January 2022.

There were no clinker exports in January 2023 as well as January 2022 as such the available clinker was fully utilized in cement production.

Comparison table of exports: January 2023 vs December 2022

January 2023	December 2022
48,508 MT of different types of bulk cement	18,478 tons of different types of bulk cement
103,015 MT of different types of bagged cement	68,208 tons of different types of bagged cement
Clinker: NIL	Clinker: NIL

Export sales



Exports in January 2023 has shown increase of around 42% over December 2022 exports.

Export and shipping teams have recorded zero demurrage for ship loadings in November as well as December 2022 months which has resulted in the better savings for the company.

Export and shipping team have continued to maintain the export customers and supporting business houses by providing professional services to them.

Export & Shipping team has managed to secure the customer payments by collecting advance payment from most of the customers.



شركة ريسوت للإسمنت
Raysut Cement Company



We Guarantee Quality
ملتزمون بالجودة



ACHIEVEMENTS

Commercials



Sales volume recorded with a growth of 70% YoY by end of 2022

Achieved a total volume of 109,258 tons as of Dec'22 which crossed last year full sales of 64,248 tons.

This is the highest recorded annual sales volume in the history of the company

Business Development



Test piles ongoing with Afcons for Bridge Project and expect to get to an agreement by Feb'23.

Started supplies to Alke Alkatas for the Waste to Energy Project in Thilafushi

Operations



Accepted shipment of 9,500 mts from MV GRIT CEMENT III





MISCELLANEOUS NEWS

Sales - Sohar Cement Factory



Local Sales - Sohar Cement Factory have recorded a decrease in Cement Sales by 26 % in January 2023 compared to December 2022

January 2023	December 2022
13,643 tons of different bulk cement	18,909 tons of different bulk cement
924,023 different bags of cement	1,246,681 different bags of cement

Production - Sohar Cement Factory



The Production of Sohar Cement Factory recorded a decrease in Cement Production quantities by 28.5 % in January 2023 compared to December 2022.

January 2023	December 2022
58,733 tons of cements	82,217 tons of cements

MISCELLANEOUS NEWS

Sales - Pioneer Cement



Pioneer clinker sales was 82107 tons in December 2022, and it was 82850 tons in December 2021.

Comparison table of Sales : January 2023 vs December 2022

January 2023	December 2021
6694 tons of different bulk cement	6488 tons of different bulk cement
13385 different bags of cement	14327 different bags of cement
41231 tons of Clinker	82107 Clinker