



شركة ريسوت للإسمنت
Raysut Cement Company

Monthly magazine



ملتزمون بالجودة,,

We Guarantee Quality



شركة ريسوت للإسمنت
Raysut Cement Company



Made in Oman



شركة ريسوت للإسمنت
Raysut Cement Company

www.raysutcement.com



CEO

Opening speech

"Dear All

- Raysut Cement Company recently bid farewell to the former CEO, Mr. Joey Goshe, after he completed four years and reached the age of retirement. We are grateful for all the contributions and efforts made by the former CEO in developing and expanding the work of Raysut Cement Company locally and globally, wishing him success in his new endeavors to level of his personal life.

In continuation of the previous phase and the future vision of the company, I assure you that we will continue with determination and confidence the plan to develop Raysut Cement Company's business and products at the local and international levels, relying on the experiences and efforts of every individual who belongs to the Raysut Cement Company family.

Wishing everyone good health and success"



Salalah – Raysut Industrial Area



info@raysutcement.com.om



www.raysutcement.om



Call to Find Out More

+ (968) 23220600

Raysut Cement Company Scoops "The Quality Choice Prize 2022"

Raysut Cement Company Oman's largest cement manufacturer, Muscat Stock Market-listed company and an emerging global cement player won the Quality Choice Prize 2022 at the ESQR's Quality Choice Prize 2022 held in Barcelona (Spain).

The ESQR is a European organization with Head Office in Lausanne (Switzerland) which promotes quality awareness recognizes good business practices, technological innovation, quality achievements in companies, public administrations and organizations worldwide, and publicizes their successful performance strategies.

ESQR's activities include quality-oriented international events, best practices implementation guides, best practice visits, recognition, networking, assessment, training, consulting and quality programs research.

The ESQR's awards are given to the companies and organizations for their ethics and initiatives that demonstrate exceptional success in quality management and maximize the full potential of their services, employees, and their valued customers.

Mr. Atul Kumar, Quality Control manager in Raysut Cement Company who attend and received the award in the gold category on behalf of Raysut Cement Company for their exceptional success in quality management and continuous efforts to enhance the quality of products and RCC global presence thanked the award organizers for their endeavor in promoting corporate excellence and for recognizing Raysut Cement Company as one of

the best companies in Oman.

"Raysut Cement Company have a robust quality management system. Which is customized with various international standards and certifications, which garnered the attention of the European society for quality and research committee and was able to be selected among a multitude of various companies, institutions, organization, and public administrations representatives from different countries.

Including Europe, Asia, The Americas, Africa, Australia, and the middle east, Raysut Cement Company quality department has worked hard to upgrade the existing quality management system and customized it with the requirement of different international certificate requirement under the guidance and vision of RCC top management

RCC has a wide range of products to satisfy not only the local customer's needs, but also the global market. And that reflects by the different certificates, permits, and licenses for different types of cement including

ISO: 9001:2015

ISO: 14001:2015

OS- 07-2001 Omani Standards

IS: 269:2015 Indian standards

CE/NF (AFNOR) (certification France)

SABPS and SANAS) south African standards

API 10 A American petroleum institute

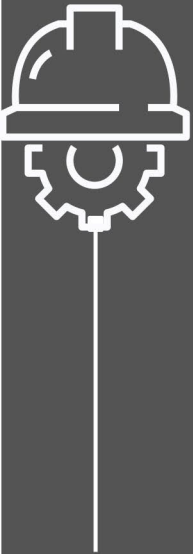
stated by Atul Mishra, management representative of the company.

the winning of this award comes as a continuation of the rich history of awards received by Raysut Cement Company over the years..



A Journey With

○○○○ Engineer



Khalid Said AL Bahdoor - Mechanical
Maintenance Engineer



Khalid have completed about seven years in Raysut Cement Company. He joined RCC in 2015 and worked in a crusher & reclaimer section. His first journey started engaged in limestone crusher, additive crusher, Stacker, reclaimer, and conveyors maintenance. In 2016 he was shifted to the raw mill and Kiln section, which is the heart of the cement factory.

His knowledge started to growth by learning all types of conveyors, vertical mill, ball mill, Cooler and kiln. Due to his enthusiasm, he started to involve with maintenance team and to do the planning for preventive, predictive and shutdown

He used to do Inventory control & inspection of spares at stores. "We always try to eliminate equipment breakdown by analysing the root cause of repeated problems, all maintenance tasks are supervised as per safety standards "said by Khalid Al Bahdoor.

My Goal

To Utilise My Technical Skills within the field of Maintenance and to support the growth and prosperity of RCC towards global Growth.

Department Vision:

Minimizing the Breakdown by reducing the cost of Maintenance and to increase the quality Job as per the best Practices.



Khalid Said AL Bahdoor
Mechanical Maintenance Engineer

A Journey With Engineer

Responsibilities	Areas of Expertise
Project planning, Scheduling, budgeting, and Monitoring	planning for Preventive, predictive, and Shutdown maintenance.
Carrying out maintenance, identifying faults and repairing equipment's	Optimization of System
Solving complex problems with manufacturing departments, sub-contractors, suppliers, and customers	Analysis of information and Decision Making
Analysis and elimination of repetitive problems through root cause	Leadership and ability to develop staff.
Analysis and elimination of repetitive problems through root cause	Achievement-focused and initiative-taking.
Maintenance of all types of conveyors, Belt conveyors, chain conveyors	
Inspection and material estimation of projects	
Provide, deliver & manage Proactive Reliability Maintenance Services	





"Value out of Waste"

- Consuming reject material of other industry from Onam Dunes Plant at Salalah free Zone thereby avoiding environment issue.

The Dunes Oman LLC (FZC) is a Casting / foundry industry manufacturing brakes part automotive industry has approached RCC to supply Foundry sand if it can be used in cement manufacturing process. This material forms during the process of manufacturing, they generate waste silica from the molds and it gets accumulated.

RCC has sent a team to the concern plant, sample has been collected and analyzed and its was meeting with RCC quality requirements. After the due study by the RCC team, with technical guidance from Chief Operation Officer(COO) RCC has accepted to use it with raw material.

Total quantity required to be consumed is not much, around 4000 Tons, but by consuming this material, it is expected to reduce the consumption of shale stone to some extent (cost saving). Adding to that RCC has demonstrated its commitment to protect environment and obtain value out of waste.

Congratulation to the Technical team of RCC on this achievements.





IT Department - Newsletters

- SAP FIORI live and active, which helps the users to access data in finger tips
- SAP SSO(Single Sign on) activated to reduce the signing issue for different platforms.
- SAP SSO(Single Sign on) activated to reduce the signing issue for different platforms.





July/2022 Export achievements

- RCC Export Sales increased Significantly by 158.38% in July compared to June 2022.

Total Export in June was 87,655.50 compared to July 2022 with total of 226,480.

PRODUCT-WISE EXPORTS- JULY 2022

MT	PRODUCT
PLC BULK	686.46
PLC BAGS	62,321.55
OPC BULK	74,453.18
OPC BAGS	29,330.00
SRC BAGS	1,040.00
SRC BULK	513.91
BULK CEMENT-CEM I 42.5N	5,200.00
BULK CEMENT-CEM I 52.5N	44,635.00
CEMENT BULK CEM I 42.5R CE NF	8,000.00
GGBS 1.5T	300.00
TOTAL- CEMENT	226,480.10
CLINKER	NIL

COUNTRY-WISE EXPORTS -JULY 2022

COUNTRY	MT
YEMEN	7,608.55
SOMALIA	21,800.00
MALDIVES	35,200.00
MAURITIUS	83,915.00
SEYCHELLES	9,130.00
COMOROS	7,700.00
MADAGASCAR	17,500.00
TANZANIA	35,626.55
MAYOTEE	8,000.00
TOTAL-CEMENT	226,480.10
CLINKER	NIL





Work Place Safety in Mechanical Maintenance Department

● Morning Toolbox Talk:

Workers need to be trained to recognize and avoid unsafe working conditions. Using common sense is only part of the solution in preventing injuries or accidents. Toolbox will cover the causes of accidents, accident prevention in the workplace and the costs of accidents to you. Common Topics of discussion are:-

- General Safety and Use of PPE
- Accidents Are Avoidable
- Unsafe Act /Unsafe Condition
- Accident/Incident Reporting
- Care For the Injured
- Listen For Danger - Listening Safety
- Near Misses
- Recognizing Unsafe Conditions
- Why Accidents Occur
- Safety is Common Sense
- Proper Lifting and ensure its usage
- Confined space safety
- Electrical hazards
- Fire Protection and control





Work Place Safety in Mechanical Maintenance Department

● SAFE WORK PRACTICE



Safe Work Practices



Welding at Confined Area



Scaffolding with safety



Working at height



Confined area Safety





Administrative Section Achievements and Improvements



Car Parking- Before



Car Parking's - After Improvements



Preparation Stage



Planting the Factory Surrounding Areas



Final Stage Surrounding Areas



Salalah – Raysut Industrial Area



info@raysutcement.com.om



www.raysutcement.om



Call to Find Out More

+ (968) 23220600



Local Sales - Products for the month of July 2022

- RCC Sales team - Dhofar Market have achieved high sales in Local Market during July 2022 with different types of Cement Products as per follows :
- Around 20000 of bulk cement, 260000 of bags cement, 3,640.290 of clinkers and 82,000 bags of cements to the North of Oman market by road with a total value of 980000 OMR.
- After following up for 6 months, Salalah Sales Team has finalized and agreed with one of the main, latest projects in Dhofar with (Premium Construction company) for (Wadi Annar Dam project) to dispatch 6000 MT of Bulk cement in a duration of 4 Months for the grounding stage starting from July 2022.

Local Sales - Products for the month of July 2022

PRODUCT	MT
PLC BULK	771.890
PLC BAGS	7,795.300
OPC BAGS	4,387.500
OPC BULK	15,912.970
MSRC-Bulk	324.750
SRC BAGS	689.000
SRC BULK	2,822.750
OWC	673.730
POZZO MIX	169.550
GGBS	160.730
Total - Cements	33708.170
Clinker	3,640.290



Khanjar ORDINARY PORTLAND CEMENT



ORDINARY PORTLAND CEMENT: Khanjar

Sohar Cement OPC is mainly used for general construction purpose. It is specially designed for initial & final higher strength and very good workability in concrete.

SCF OPC main applications :-

- ◆ General concreting & all cement applications.
- ◆ High rise buildings constructions.
- ◆ Road construction.
- ◆ Construction of dam.
- ◆ Bridges & fly over construction.

SCF OPC products conform to each of the following specifications :

British Standard European Norms	BS EN 197-1:2011 CEM -I 42.5 N
Omani Standard Specification	BS EN 197-1:2011 CEM -I 42.5 R
The standards of the American Society for Testing materials	OS -7/2001
	ASTM C -150 TYPE-I



Made in Oman



مصنع إسمنت صحر
SOHAR CEMENT FACTORY



CEMENTSOHAR



SOHARCEMENT

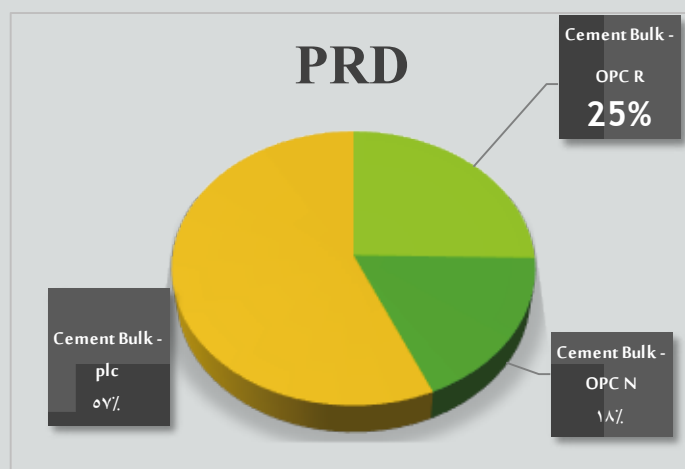


WWW.SOHARCEMENT.COM



SCF Cement Production - July 2022

Material	Cement Grade	MDT Production (MT)
1030101	Cement Bulk - OPC R	8641
1030701	Cement Bulk - OPC N	6193
1030306	Cement Bulk - plc	19312
Total	Cement PRD	34146



Shutdown Maintenance -MECHANICAL DEPARTMENT

**Dust accumulating downside of all Raw material transport belt conveyor
Due to limestone and gypsum fine dust stick with belt conveyor and when belt return material fall near head pulley.**



We first apply cleaning brush on one belt conveyor, and we found its cleaning belt conveyor very well .Only we need to design to brush adjustment because of brush worn-out then we make brush adjustment system and we run one brush 60 day. After success of design, we apply to all 09- belt conveyor .



Total Cost Saving



(OMR X 9 (09 belt conveyor 2500

Total cost coming for motorized brush
2500 OMR X 9 (09 belt conveyor) = 22500

(OMR X 9 (09 belt conveyor 150

Electricity cost of motor running yearly =
1350

(OMR X 9 (09 belt conveyor 320

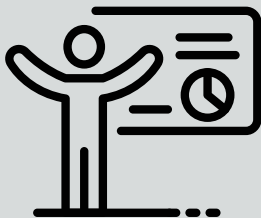
Cleaning of spillage material cost yearly
= 2880

(OMR X 9 (09 belt conveyor 25

Total cost saving yearly - 26500 OMR

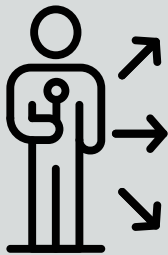
Best Practices Implemented ,Mechanical team

- Maintenance ,Painting and fixing new Fire Extinguisher for Forklift



QUALITY CONTROL DEPARTMENT.

Painting down in SCF Laboratory corridor area wall & rusted equipment's (1,2,3) by using own manpower at the time of plant breakdown.
SOPs (Standard operating procedure) are implemented for all Lab equipment's (4).



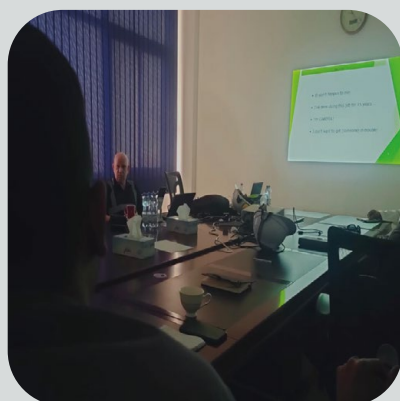
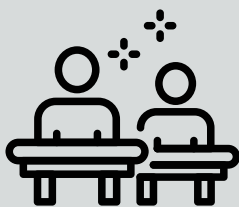
SAFETY & HSE DEPARTMENT

- Environmental monitoring for Q2-2022, Workplace Noise Monitoring and stack emission monitoring are complete, and report send to EA Sohar



Training Q2 2022

► Behavioral Based Training



We get 49 Trees from Madayn Sohar

- Trees were planted near the Driver Room
- The total of the planting trees is 25



Weighbridge No.1

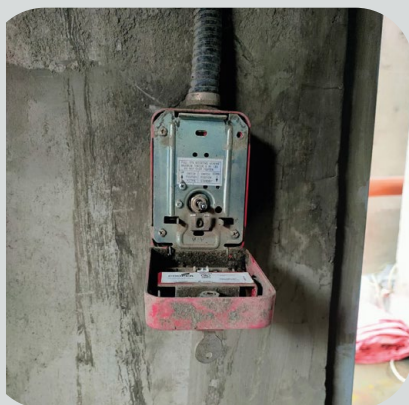


BEFORE

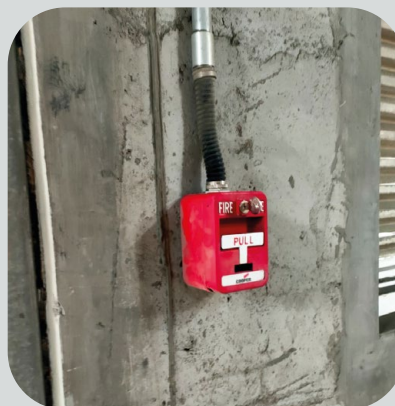


AFTER

Weighbridge No.1 Outside



BEFORE



AFTER

- Fixing new Call point on Admin Office and Mill Section Area and replacing the smoking detector on the Packing Plant area



Waste of Landfill & Recycle Material

Waste	• Waste to Landfill (Measured in kg) in April 2022 = 5780
Waste	• Waste to Landfill (Measured in kg) in May 2022 = 2040
Waste	• Waste to Landfill (Measured in kg) in June 2022 = 1760
Recycle	• Recycle cement from packing plant area in April 2022 : around (209320)
Recycle	• Recycle cement from packing plant area in May 2022 : around (271120)
Recycle	• Recycle cement from packing plant area in June 2022 : around (85440)



- ▶ **Recycle cement in April 2022 : around (287960)**
- ▶ **Recycle cement in May 2022 : around (595400)**
- ▶ **Recycle cement in June 2022 : around (23400)**

NEW Prayer Rooms

- ▶ **Prepared Two Prayer Rooms for Men & Women in the Admin Building at SCF**



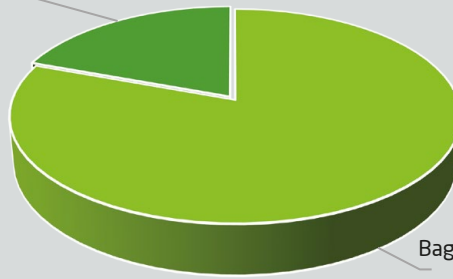


SCF Cement Sales - July 2022

Material	Cement Quantity (MT)	Cement Value (OMR)
Bagged Cement OPC	5833.2	123297.2
Bagged Cement PLC	17878.5	357570
Bulk Cement OPC	5607.82	112156.4
Bulk Cement PLC	111.8	2124.2
Total Bagged Cement	29431.32	595147.8

Bulk Cement
19%

SCF Cement Sales - July 2022



Bagged Cement
81%





Commercial

Sales volumes have recorded a growth of 82% Y-o-Y till July'22.

With volumes of 64,462 tons till Jul'22, have crossed Last Full Year's Sales of 64,248 tons



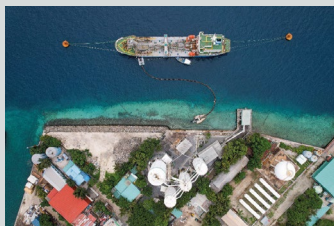
Business Development

- ▶ **RMCPPL finalized the deal with Turkish Company, ALKE TURMAKS to supply approximately 3000 tons of cement to first such project in Maldives for converting Waste to Energy Powerhouse.**
- ▶ **RMCPPL has been further awarded the second phase contract by Afcons, through STO RMX, to supply cement for piling works of Thila-Male Bridge Megaproject with an approximate consumption of 360 tons per Onboarded STO**
- ▶ **Regionals for supply of approximately 2000 tons of cement every month which would prevent direct Importing of Indian Cement.**



Operations

RMCPPL has time chartered MV TAIHO (5200 tons) pneumatic vessel for 11 months with the first maiden voyage arrival on 30th June 2022.



Salalah – Raysut Industrial Area



info@raysutcement.com.om



www.raysutcement.om



Call to Find Out More

+ (968) 23220600



SAFETY

We achieved: Zero LTI, Zero Medical, Zero Incident

- ▶ **Carried out TBT on machinery safety**
- ▶ **AMC placed for fire system.**
- ▶ **Maintenance & inspection carried out on all fire system.**
- ▶ **Closed HSE observations identified by Government of Ras AlKhaimah when they visited Pioneer plant on July-2022.**



ADMIN

- ▶ **Renewal of Civil Defense License**



OPERATION

- ▶ **Gas pipeline job for Kiln & Piroclone burner completed.**
- ▶ **Kiln running first time with 100% Natural Gas as fuel.**
- ▶ **Now Pyro section can run with gas or coal or Both.**





Lost Time Injury Frequency Rate

- ▶ The Lost Time Injury Frequency Rate (LTIFR) and Total Recordable Injury Rates (trir) for Raysut Group of companies are shown below:

LTIFR	Actual 0.33	Target 0.50
TRIR	Actual 1.25	Target ≤ 5

Accidents and Incidents

- ▶ It is with regrets that we have to report a Lost Time Injury at our Salalah Factory, the incident happened during cleaning operations where a contractor fell from height.
- ▶ The contractor is recovering at home after short admission to hospital, the person is recovering well supported by the company.

The findings from the incident will be shared once full investigation is complete.

Raysut Group Targets Zero Accidents and Incidents



Risk Assessment and Management

- ▶ Good Health & Safety Management starts with Risk Assessment managers and supervisors must ensure risk assessments are in place and communicated to all employees and contractors.
- ▶ Risk Assessment will identify the hazards and risks and put in place measures to minimize hazards and risks to establish the best way of working to keep you and others safe whilst at work.
- ▶ Management and HSSE Team to review risk assessments after recent LTI to ensure that additional risks and processes are in place to implement effect controls.



Common Causes of Accident

- ▶ Many of the Human Factors resulting in accidents are not willful behaviors. Human factors are responsible for large number of accidents that occur in a workplace.

The following human factors are common causes of accidents:

- Failure to pre-plan work
- Memory lapses
- Taking shortcuts
- Poor housekeeping
- Distractions
- Ignoring safety procedures and/or instructions
- Using damaged or the wrong tool for the job
- Lack of competence and/or experience
- Failure to wear PPE

Training and Development

- ▶ Three members of HSSE Team are embarking on NVQ Level 6 Diploma in Occupational Safety and Health.

Behavioural Based Safety Training will be undertaken at all facilities and completed by end Q2022-3.

Fire Training was undertaken at Pioneer Cement Industries by Civil Defence congratulations to all participants on passing the course

Blood Donation

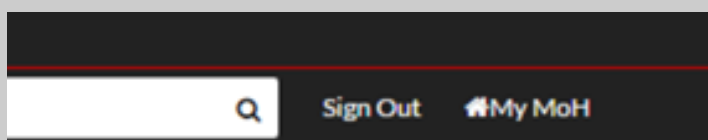
- ▶ The Department of Blood Banks Services undertook blood donation clinic at Raysut Cement Company Salalah, the event was a success with employees participating in this vital service.





To Register

- ▶ Blood Bank service allows you to request register yourself as a donor (if not already registered in MOH) and then register your donation forms electronically. Registering your donation online saves you time when you visit the blood bank or the blood donation campaign site as you will not need to submit the form manually and wait for an approval.
- ▶ To access this service
 - Sign into eHealth Portal by clicking Sign In button above
 - A new button called My MoH will appear on the top bar, click this to go to the dashboards



- Next, click Patient Dashboard
- On the Patient Dashboard, you will see all patient related services. To register yourself as a donor or register your blood donation, use the "Blood Bank" application:

