



شركة ريسوت للإسمنت  
Raysut Cement Company

# Monthly magazine

## Raysut Cement Company



# 2022

---

## CEO Message

---

Dear All

Here we are in the second month of 2022, as we all have high ambitions that this year will be more prosperous and growth for Raysut Cement Group, we eagerly anticipate the operation of the Duqm project which will enable us more broadly to meet the requirements of the Omani market as well as other regional markets and the waste heat recovery project at the Raysut cement in Salalah which will contribute significantly to reducing the operational costs.

Wishing everyone good health and happiness"

---





## Shutdown Achievements

Salalah Plant team completed the Line3- shutdown within record time. This shutdown, originally scheduled for 45 days but completed within 38 days, involved the following critical jobs:

- 1- Existing Cooler upgrade to the latest IKN model.
- 2- Kiln shell & tyre replacement at the outlet (12 – 0 meter) & Kiln girth gear replacement.
- 3- Pre-Heater (including cyclones & pyroclone) maintenance.
- 4- Hook up the arrangement of the Waste Heat Recovery System.

Many of these shutdown jobs involved execution at high elevation and thus praiseworthy to complete without any safety incident and within a record time of 38 days.

During the previous month, Salalah Plant also achieved the renewal certification of both the API (American) System & CE+NF (European) System successfully without a single NC (non-conformities). Both certifications require stringent quality control measures leading to impeccable products.

The above-mentioned achievements reflect the Commitment, Resilience & Team-spirit of this Unit.

We hope this exemplary performance shall be continued in the coming future too.



## Exports

### COUNTRYWIDE EXPORTS -JAN / 2022

PRODUCT	MT
PLC BULK	21,223.04
PLC BAGS	68,357.00
OPC BULK	8,066.32
OPC BAGS	13,390.00
SRC BAGS	1,262.50
SRC BULK	507.25
TOTAL- CEMENT	112,806.11
CLINKER	NIL



## Completion of interior design and furnishing for SCF sales Office at Ghashba







## Booster dose 19-Sohar Cement Factory employees took the third anti-coronavirus COVID





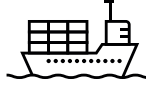
## Commercial

- ▶ Achieved a total volume of 64,248 t for the full year which is the 3rd highest sales in the past 15 years.
- ▶ Annual Sales volume recorded a growth of %58 over last year.
- ▶ Doubled the market share to %31 compared to last year's %15 market share.





## Commercial



- ▶ Highest sales in a single month in the history of our 23 years old company with figures of 15,057 mt.
- ▶ Highest volumes sold through the Terminal in a single month at 12,057 mt. Sales volume recorded a growth of %416 Y-o-Y.
- ▶ Sales recorded both from the Terminal and overall are probably the highest ever in Maldives in a single month.
- ▶ Crossed 1 Million in Sales Value in a Single Month for the first time ever.





## Business Development



- ▶ Started supplies to Apollo Holdings against their annual contract of 30,000 tons.
- ▶ Started negotiations with Mohan Mutha Exports, one of the strongest traders from India, for their supplies in Maldives.
- ▶ Moved into the final phase of receiving orders for various Water & Sewerage Projects being implemented across 150 islands of Maldives mostly by Indian Contractors such as SMC and Triveni
- ▶ Started supplies to Rain Land Developers through STO Ready-mix for their new 14 floor Towers in Hulhumale.





## Business Development



- ▶ Signed the biggest single Annual Contract for minimum 30,000 tons for 2022 with Apollo Holdings and commenced the first supplies in Jan'22.
- ▶ Kicked off supplies to Indian Contractors, Vishvaraj & SMC for their Water & Sewerage Projects across 21 islands.
- ▶ Started discussion through STO to supply concrete to Afcons Bridge Project.





## Operations



- ▶ Imported total volume of 69,487 tons with a growth of 7.88 over last year securing a market share of 7.31.
- ▶ Received 15141 tons in Bulk and 9500 tons in Bag Consignment totaling to 24641 tons in a Single Month which is the highest ever not only for our Terminal but for Maldives in a Single Month
- ▶ Dispatched 12027 tons from our Terminal which is highest ever in a Single Month across Maldives.





### LTIFR and TRIR 2021 Statistics

Target for BU's LTI ≤ 0.5 TRIR ≤ 5	SCF	Pioneer	RCC and WHR	Duqm Terminal	Duqm Project	Maldives	Total Group
LTIFR YTD	0.00	0.35	1.04	0.00	0.00	0.00	0.42
TRIR YTD	12.56	1.71	11.52	0.00	0.00	0.00	5.18

#### KPI

- The group had a very good year in 2021 achieving all but one of their KPI's, the group failed to meet the KPI for Total Recordable Incident Rate (TRIR) where the target was ≤5 the result for TRIR in 2021 was YTD 5.18. The Lost Time Injury Frequency Rate for the Group was ≤0.5 down from ≤1 in 2020
- RCC were unable to meet their target in 2021 due to a Lost Time Injury in November 2021. RCC has more than doubled it's workforce in 2021 due to a number of complex projects WHR, Cooler Replacement and a major shutdown during November to December.
- SCF had a serious of minor transport incidents in first half of year resulting in failure to meet TRIR. Since new procedures and better traffic management on site the number of incidents has decreased.
- KPI for 2022 sent to all BU's and agreed by COO/Plant Managers.



## Covid 19

- **MOH Statement - "Around 90% of Covid19 deaths in Oman are attributed to unvaccinated people, we strongly advise everyone to get vaccinated and to follow up with the booster dose"**

**MOH Oman is offering the vaccination to residents and ex-pats "Free of Charge" to date approximately 50% of all employees in RCC Group have received the booster vaccination. If you require any information regarding government vaccination centers in your country of operation speak with your male nurse or manager.**

### **Improvements**

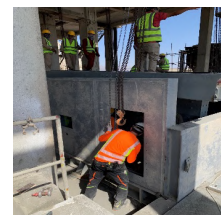
#### **Group**

- **HSSE succession plan complete**
- **Covid19 Travel Procedure (Amended)**



## miscellaneous news

- **RCC**
  - New security checks implemented (Joint patrols with Emergency Response Team Leader)
  - Bulkers cleaned prior to departure from plant
  - RCC safety Inspections



- **SCF**
  - Planting 55 new trees to improve green spaces at factory
  - Recycled 96 Jumbo Bags of waste cement totaling 161.2 ton

- **Pioneer**
  - Undertook first aid refresher training
  - Guard fitted around fall hazard (see below)







## miscellaneous news

- **Duqm**
  - Electronic submission of chemical inventory (SEZAD)
- **Training Topics**

The training topic for January is Environmental Aspects and Impacts - to be delivered by HSE Team
- **High Risk Activity**

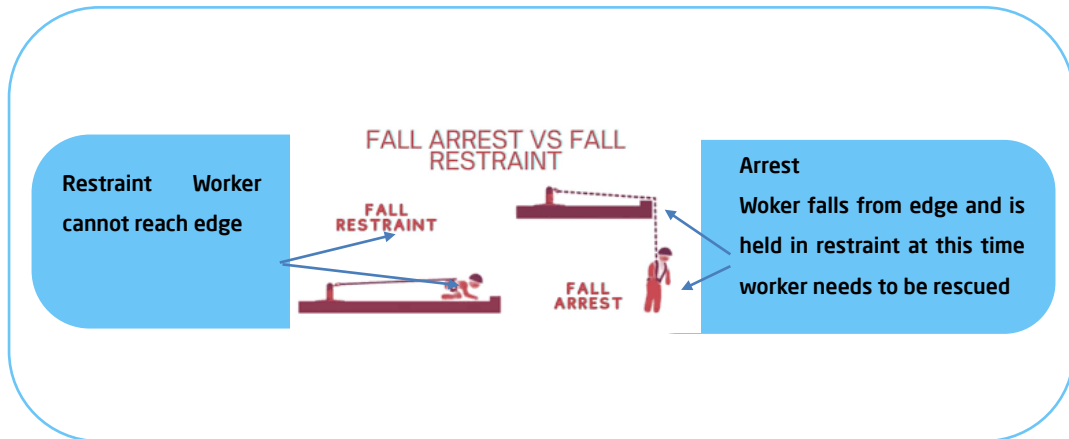
During the installation of the new kiln section the welds were required to be checked using radiographic techniques. Radiographic Testing (RT) is a non-destructive testing (NDT) method which uses either x-rays or gamma rays to examine the internal structure of manufactured components identifying any flaws or defects in the case at RCC the technique was used for finding porosity, cracks, inclusions, and voids in the inside of weldments.



Area cordoned off during  
Radiographic Testing



### miscellaneous news



- When using fall arrest systems you require 6.5m of free space from edge to first strike object. Failing to meet the criteria can result in fatalities or serious injury.





شركة ريسوت للإسمنت (ش.م.ع.ع.)  
RAYSUT CEMENT COMPANY (S.A.O.G)  
SALALAH  
SULTANATE OF OMAN  
www.raysutcement.com.om



ISO 9001:2015 & ISO 14001:2015 CERTIFIED COMPANY

OS -7/2001, BS EN 197-1:2011 CEM -1 42.5 N

إسمنت بورتلاندي عادي  
ORDINARY PORTLAND  
CEMENT

50 KG

٥٠ كجم



Omani



Made in Oman

ملتزمون بالجودة،  
We Guarantee Quality



شركة ريسوت للإسمنت  
Raysut Cement Company

www.raysutcement.com.om